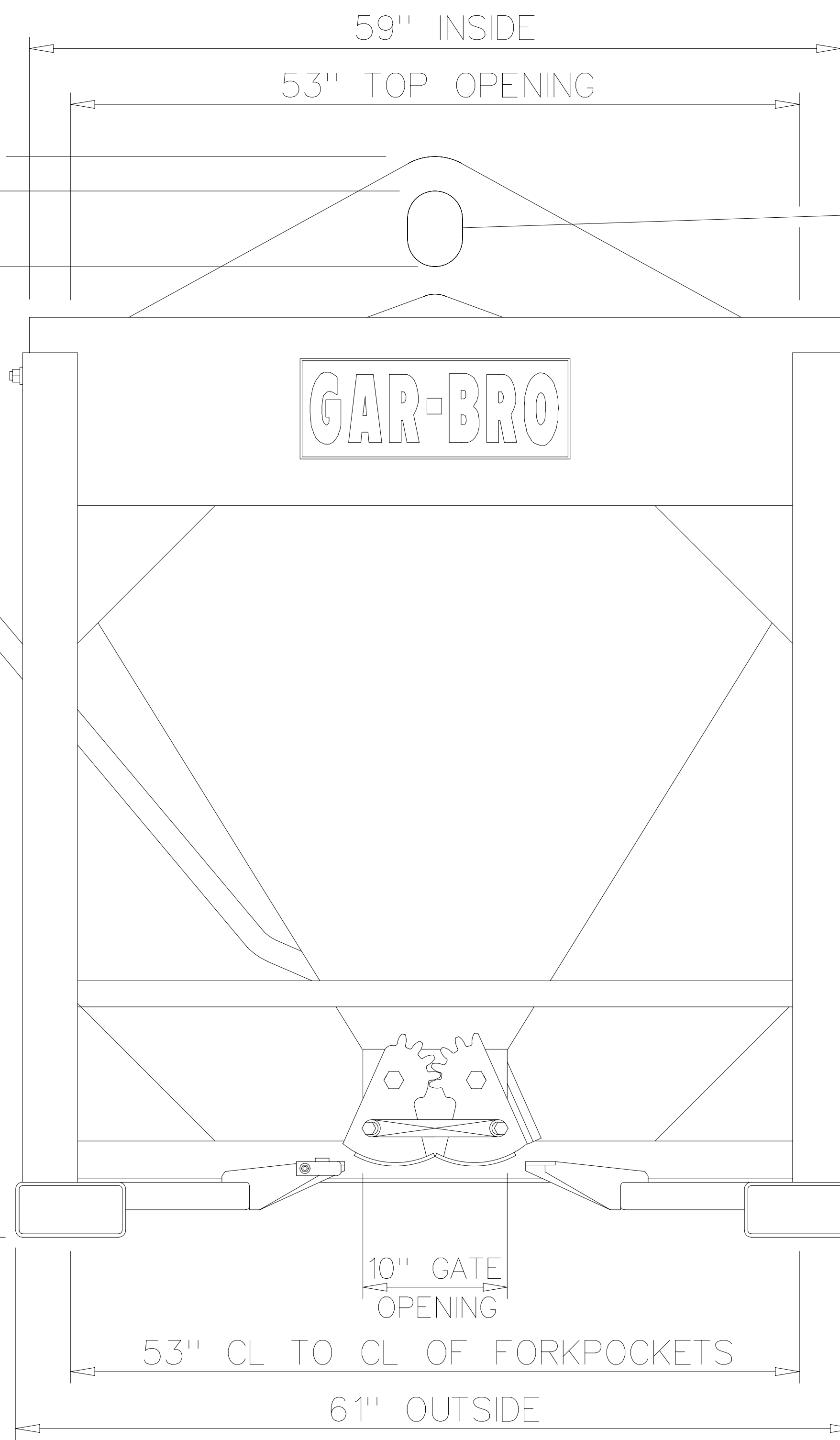
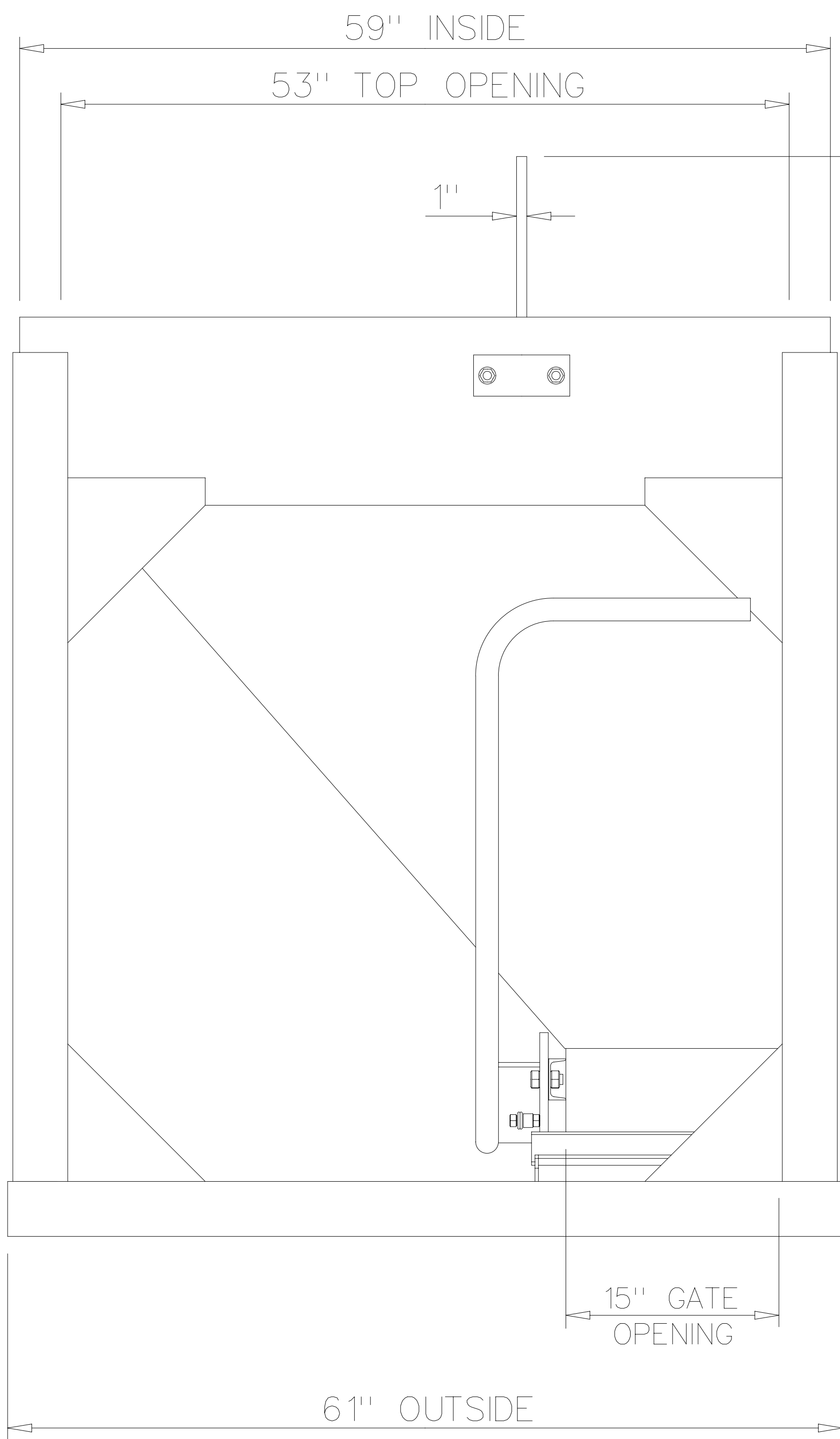


NOTE: FORKLIFT REQ'D TO USE THIS BUCKET
MUST BE CAPABLE OF HANDLING
13,750 LBS. @ 24 INCH LOAD CENTER
ASSUMES MAT'L DENSITY OF 145 LBS./CU. FT.
LOADED CG @ 24-INCHES FROM FACE OF FORKS

NOTE: WIDE FORK CARRIAGE MAY BE REQUIRED
FOR USE ON CERTAIN MACHINES

BUCKET DATA:

BUCKET RATED CAPACITY: 2.0 CUBIC YARDS
BUCKET WATER LEVEL CAPACITY: 57.8 CUBIC FEET
FREEBOARD AT RATED CAPACITY: 2 INCHES
BUCKET EMPTY WEIGHT: 945 LBS
MAXIMUM GROSS WEIGHT: 9,500 LBS



4"X5 1/2" OPENING

3 5/8" X 7 5/8" INSIDE POCKETS TYP

GAR-BRO MANUFACTURING CO.
104 BOLTON SULLIVAN DRIVE P.O DRAWER 1077
HEBER SPRINGS, ARKANSAS - 72543-1077

ITEM 4958
2 CUBIC YARD
COMBO BUCKET
10" X 15" MANUAL GATE

SCALE	NONE	SHOP NO.	SALES
DATE	10-3-97	SHIPPING CUBICS	
REVISED	2-5-10	DRAWING NO.	
MADE BY	JPA	97-57	
CHANGED TO/FROM		SHEET AA OF	
SUPERSEDES			